

English

Agricultural telehandlers

MLT NewAg

MLT 630-115 V CP (S2)

MACHINEBOOK



 **MANITOU**
HANDLING YOUR WORLD

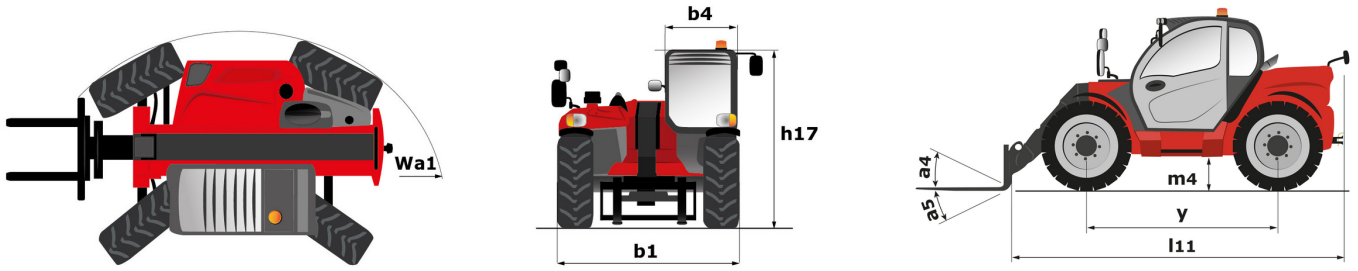
MLT 630-115 VCP (S2) - TECHNICAL DATA

Capacities		Metric
Max. capacity	Q	3000 kg
Max. lifting height	h3	6.11 m
Maximum outreach		3.50 m
Reach at max. height		0.90 m
Breakout force with bucket		5671 daN
Weight and dimensions		
Unladen weight (with forks)		6620 kg
Ground clearance	m4	0.28 m
Wheelbase	y	2.69 m
Overall length to carriage (with hitch)	l11	4.86 m
Front overhang		1.32 m
Overall width	b1	2.06 m
Overall cab width	b4	0.95 m
Overall height	h17	2.14 m
Tilt-down angle	a5	133 °
Tilt-up angle	a4	14 °
External turning radius (over tyres)	Wa1	3.65 m
Standard tires		Alliance - A580 - 400/70 R20 149A8
Drive wheels (front / rear)		2 / 2
Steering wheels (front / rear)		2 / 2
Performances		
Lifting		6.10 s
Lowering		5.10 s
Extension		6.30 s
Retraction		5.70 s
Crowd		4.10 s
Dump		3.30 s
Engine		
Engine brand		Deutz
Engine norm		Stage V
Engine model		TCD 3.6 L4
Number of cylinders - Capacity of cylinders		4 - 3621 cm ³
Engine power (Hp / kW)		116 Hp / 85 kW
Max. torque / Engine rotation		460 Nm @1600 rpm
Drawbar pull (Laden)		6280 daN
Reversible fan		Standard
Engine cooling system		4 radiators (water + intercooler + oil + fuel)
HVO validated (according to EN 15940 standard)		Yes
Transmission		
Transmission type		M-Varioshift
Number of gears (forward / reverse)		2 / 2
Max. travel speed (may vary according to applicable regulations)		38 km/h
Differential lock		Limited slip differential on front axle
Parking brake		Manual
Service brake		Oil-Immersed multi-discs braking on front axles
Hydraulics		
Hydraulic pump type		Gear pump
Hydraulic flow - Pressure		106 l/min - 250 bar
Flow sharing distributor		Option
Tank capacities		
Hydraulic tank capacity		94 l
Fuel tank		78 l
Diesel Exhaust fluid (AdBlue® type)		13 l
Noise and vibration		
Noise at driving position (LpA) tested following NF EN 12053 norm		73 dB
Vibration on hands/arms		< 2.50 m/s ²
Miscellaneous		
Tractor homologation		Tractor homologation
Cab certification		Cabin ROPS - FOPS level 2
Controls		JSM

Optional tires tab

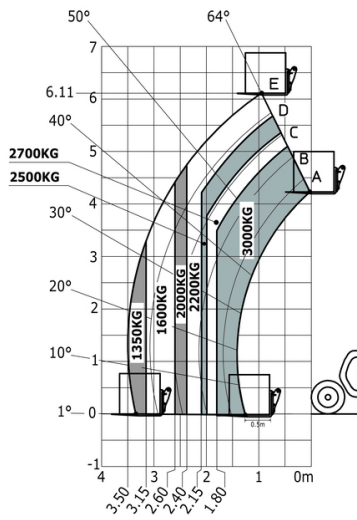
	Overall height	Overall width
ALLIANCE - A331 - 500/45-20 160A8	2.10 m	2.20 m
MICHELIN - XMCL - 400/70 R20 149A8	2.14 m	2.06 m
MICHELIN - BIBLOAD - 400/70 R20 149A8	2.18 m	2.06 m

MLT 630-115 V CP (S2) - DIMENSIONAL DRAWING



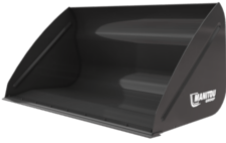
MLT 630-115 V CP (S2) - LOAD CHART

Machine on tires with forks Metric



BUCKETS

Agricultural Bucket



Agricultural Bucket - CBA 1700L / 2100

Distance to center of gravity	Capacity	Heaped capacity	Struck capacity	Overall weight	Overall height
440 mm	1703 kg	1703 l	1271 l	512 kg	1150 mm
Overall length	Width	Reference number	Reference number with bolted wearplate (WP)		
1190 mm	2100 mm	570549	52610570		

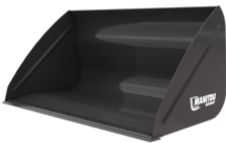
Mandatory machine equipment: ✕



Agricultural Bucket - CBA 2000 / 2450

Distance to center of gravity	Capacity	Heaped capacity	Struck capacity	Overall weight	Overall height
485 mm	2010 kg	2010 l	1484 l	557 kg	1150 mm
Overall length	Width	Reference number	Reference number with bolted wearplate (WP)		
1204 mm	2450 mm	570551	570552		

Mandatory machine equipment: ✕



Agricultural Bucket - CBA 2000L / 2250

Distance to center of gravity	Capacity	Heaped capacity	Struck capacity	Overall weight	Overall height
664 mm	1970 kg	1970 l	1456 l	585 kg	1104 mm
Overall length	Width	Reference number	Reference number with bolted wearplate (WP)		
1422 mm	2250 mm	790540	790541		

Mandatory machine equipment: ✕


BUCKETS

Agricultural Multifunction Grab Bucket - FO



Agricultural Multifunction Grab Bucket - FO - BG 2100 / 1200 FO

Distance to center of gravity	Capacity	Heaped capacity	Struck capacity	Overall weight	Overall length
396 mm	1200 kg	1200 l	740 l	720 kg	1256 mm
Width	Closed grapple height	Opened grapple height	Reference number		
2100 mm	1033 mm	1675 mm	52647329		

Mandatory machine equipment: 



Agricultural Multifunction Grab Bucket - FO - BG 2300 / 1350 FO

Distance to center of gravity	Capacity	Heaped capacity	Struck capacity	Overall weight	Overall length
408 mm	1335 kg	1335 l	813 l	763 kg	1256 mm
Width	Closed grapple height	Opened grapple height	Reference number		
2300 mm	1031 mm	1675 mm	52647331		

Mandatory machine equipment: 



Agricultural Multifunction Grab Bucket - FO - BG 2450 / 1400 FO

Distance to center of gravity	Capacity	Heaped capacity	Struck capacity	Overall weight	Overall length
407 mm	1426 kg	1426 l	868 l	803 kg	1256 mm
Width	Closed grapple height	Opened grapple height	Reference number		
2450 mm	1033 mm	1675 mm	52647333		

Mandatory machine equipment: 

BUCKETS

Agricultural Multifunction Grab Bucket - WE



Agricultural Multifunction Grab Bucket - WE - BG 2100 / 1200 WE

Distance to center of gravity	Capacity	Heaped capacity	Struck capacity	Overall weight	Overall length
412 mm	1200 kg	1200 l	740 l	745 kg	1280 mm
Width	Closed grapple height	Opened grapple height	Reference number		
2100 mm	1032 mm	1776 mm	52647328		

Mandatory machine equipment: 



Agricultural Multifunction Grab Bucket - WE - BG 2300 / 1350 WE


Distance to center of gravity	Capacity	Heaped capacity	Struck capacity	Overall weight	Overall length
413 mm	1335 kg	1335 l	813 l	785 kg	1280 mm
Width	Closed grapple height	Opened grapple height	Reference number		
2300 mm	1031 mm	1776 mm	52647330		

Mandatory machine equipment: 



Agricultural Multifunction Grab Bucket - WE - BG 2450 / 1400 WE

Distance to center of gravity	Capacity	Heaped capacity	Struck capacity	Overall weight	Overall length
418 mm	1426 kg	1426 l	868 l	813 kg	1280 mm
Width	Closed grapple height	Opened grapple height	Reference number		
2450 mm	1033 mm	1776 mm	52647332		

Mandatory machine equipment: 


BUCKETS

Big Bag Filling Bucket



Big Bag Filling Bucket - BBF 1200 / 600

Heaped capacity	Overall weight	Overall height	Overall length	Width	Reference number
600 l	455 kg	685 mm	1549 mm	1200 mm	52676645

Mandatory machine equipment: 



Big Bag Filling Bucket - BBF 1400 / 1100

Heaped capacity	Overall weight	Overall height	Overall length	Width	Reference number
1120 l	610 kg	923 mm	1723 mm	1400 mm	52614700

Mandatory machine equipment: 



BUCKETS

Concrete Mixing Bucket



Concrete Mixing Bucket - BMC 500

Capacity	Overall weight	Overall height	Width	Depth	Reference number
500 kg	770 kg	1050 mm	1950 mm	1050 mm	52728343

Mandatory machine equipment:  + 

BUCKETS

Construction Bucket



Construction Bucket - CBC 750L / 2100

Distance to center of gravity	Capacity	Heaped capacity	Struck capacity	Overall weight	Overall height
360 mm	1613 kg	768 l	616 l	345 kg	810 mm
Overall length	Width	Reference number			
1048 mm	2100 mm	654475			

Mandatory machine equipment: ✕



Construction Bucket - CBC 800L / 2250

Distance to center of gravity	Capacity	Heaped capacity	Struck capacity	Overall weight	Overall height
355 mm	1709 kg	814 l	666 l	366 kg	810 mm
Overall length	Width	Reference number			
1026 mm	2250 mm	654471			

Mandatory machine equipment: ✕

BUCKETS

General Purpose Bucket



General Purpose Bucket - CBR 850 / 2100

Capacity	Heaped capacity	Struck capacity	Overall weight	Overall height	Overall length
1770 kg	843 l	685 l	358 kg	775 mm	838 mm
Width	Reference number				
2100 mm	653047				

Mandatory machine equipment: ✕



General Purpose Bucket - CBR 900 / 2250

Capacity	Heaped capacity	Struck capacity	Overall weight	Overall height	Overall length
1898 kg	904 l	736 l	360 kg	775 mm	815 mm
Width	Reference number	Reference number E-RECO			
2250 mm	653749	921281			

Mandatory machine equipment: ✕

BUCKETS

General Purpose Bucket Essential



General Purpose Bucket Essential - BGP 2000 / 800 Essential

Distance to center of gravity	Capacity	Heaped capacity	Struck capacity	Overall weight	Overall height
425 mm	1684 kg	802 l	622 l	345 kg	786 mm
Overall length	Width	Depth	Reference number		
925 mm	2000 mm	817 mm	52688160		

Mandatory machine equipment: ✕


CLAMPS

Bale clamp classic



Bale clamp classic - CLBR 2x3


Capacity	Overall weight	Overall height	Overall length	Forks length	Width
1200 kg	235 kg	1382 mm	1082 mm	335 mm	1090 mm
Arm length	Reference number				
700 mm	52001013				

Mandatory machine equipment: 



Bale clamp classic - PBG 2x4

Capacity	Overall weight	Overall height	Overall length	Forks length	Width
1800 kg	235 kg	1381 mm	1031 mm	335 mm	1090 mm
Arm length	Reference number				
600 mm	757612				

Mandatory machine equipment: 


CLAMPS

Bale Clamp Intensive



Bale Clamp Intensive - P2BG 2x4

Capacity	Overall weight	Overall height	Overall length	Width	Arm length
1800 kg	283 kg	1776 mm	1047 mm	1090 mm	600 mm
Reference number					
790518					

Mandatory machine equipment: 


CLAMPS

Bale Clamp Super Compact



Bale Clamp Super Compact - PBG 2x2

Capacity	Overall weight	Overall height	Overall length	Forks length	Width
800 kg	156 kg	869 mm	922 mm	335 mm	1090 mm
Arm length	Reference number				
500 mm	757639				

Mandatory machine equipment: 


CLAMPS

Mixed Bale Clamp



Mixed Bale Clamp - MBC 2x3

Capacity	Overall weight	Overall height	Overall length	Forks spread	Width
800 kg	290 kg	1084 mm	1454 mm	375 mm	1196 mm
Reference number					
790506					

Mandatory machine equipment: 


CLAMPS

Square wrapped bale clamp



Square wrapped bale clamp - CLBSW 2000 / 1000

Capacity	Overall weight	Overall height	Overall length	Width	Arm length
1000 kg	483 kg	679 mm	1849 mm	1525 mm	1000 mm
Reference number					
52000812					

Mandatory machine equipment: 


CLAMPS

Wood Clamp



Wood Clamp - CLHW 1200/3

Capacity	Overall weight	Overall height	Overall length	Width	Closed grapple height
3000 kg	461 kg	1185 mm	1091 mm	1248 mm	1185 mm
Opened grapple height	Minimum diameter / Maximum diameter	Reference number			
1429 mm	460 mm / 900 mm	52797759			

Mandatory machine equipment: 

CLAMPS

Wrapped Bale Clamp



Wrapped Bale Clamp - CLBW 800

Capacity	Overall weight	Overall height	Overall length	Width	Reference number
800 kg	227 kg	810 mm	1386 mm	1587 mm	52000813

Mandatory machine equipment:



Wrapped Bale Clamp - CLBW 1500

Capacity	Overall weight	Overall height	Overall length	Width	Reference number
1500 kg	251 kg	810 mm	1490 mm	1587 mm	52001012

Mandatory machine equipment:

ON FORK HANDLING SOLUTIONS

Carriage Floating Load Backrest And Forks (MT - MLT)



Carriage Floating Load Backrest And Forks (MT - MLT) - CAF 1000 / 3 LB

Distance to center of gravity	Capacity	Overall weight	Overall height	Overall length	Width
308 mm	3000 kg	240 kg	989 mm	1359 mm	1002 mm

Reference number
52654990

Mandatory machine equipment: ✕



Carriage Floating Load Backrest And Forks (MT - MLT) - CAF 1000 / 3 LB (b)

Distance to center of gravity	Capacity	Overall weight	Overall height	Overall length	Width
263 mm	3000 kg	254 kg	989 mm	1479 mm	1002 mm

Reference number
52744200

Mandatory machine equipment: ✕

ON FORK HANDLING SOLUTIONS

Tilting Forks Carriage



Tilting Forks Carriage - PFB 35N 1260

Capacity	Overall weight	Width	Reference number
3500 kg	93 kg	1302 mm	653744

Mandatory machine equipment: ✕



Tilting Forks Carriage - PFB 35N 1470

Capacity	Overall weight	Width	Reference number
3500 kg	117 kg	1512 mm	653745

Mandatory machine equipment: ✕



Tilting Forks Carriage - PFB 35N 1580

Capacity	Overall weight	Width	Reference number
3500 kg	122 kg	1622 mm	653746

Mandatory machine equipment: ✕

ON FORK HANDLING SOLUTIONS

Tilting Forks Carriage With Load Backrest (MLT - MT)



Tilting Forks Carriage With Load Backrest (MLT - MT) - PFB 35N 1260 LB

Capacity	Overall weight	Overall height	Width
3500 kg	130 kg	1185 mm	1284 mm

Mandatory machine equipment: ✕



Tilting Forks Carriage With Load Backrest (MLT - MT) - PFB 35N 1470 LB

Capacity	Overall weight	Overall height	Width
3500 kg	158 kg	1185 mm	1494 mm

Mandatory machine equipment: ✕

FORKS & GRABS

Manure Fork With Grapple



Manure Fork With Grapple - FFGR 1950

Capacity	Heaped capacity	Overall weight	Overall length	Forks length	Forks spread
1580 kg	1000 l	477 kg	1322 mm	810 mm	225 mm
Width	Closed grapple height	Opened grapple height	Reference number		
1950 mm	1138 mm	1625 mm	751404		

Mandatory machine equipment:



Manure Fork With Grapple - FFGR 2100

Capacity	Heaped capacity	Overall weight	Overall length	Forks length	Forks spread
1700 kg	1100 l	492 kg	1322 mm	810 mm	225 mm
Width	Closed grapple height	Opened grapple height	Reference number		
2100 mm	1138 mm	1636 mm	751403		

Mandatory machine equipment:

FORKS & GRABS

Shear Grab



Shear Grab - SHG 1800 / 1350

Capacity	Heaped capacity	Overall weight	Overall length	Width	Closed grapple height
1184 kg	1315 l	749 kg	1295 mm	1854 mm	1010 mm
Opened grapple height	Depth	Reference number			
1475 mm	850 mm	52000381			

Mandatory machine equipment:

FORKS & GRABS

Square Bale Forks



Square Bale Forks - FB 1900 / 1700

Capacity	Overall weight	Overall height	Overall length	Forks length	Forks spread
1700 kg	215 kg	2236 mm	1341 mm	1010 mm	600 mm
Width	Reference number				
1878 mm	790699				

Mandatory machine equipment: ✕

JIBS

Big Bag Handler



Big Bag Handler - HBB 1500 / 2400

Distance to center of gravity	Capacity	Overall weight	Overall height	Overall length	Forks spread
388 mm	2400 kg	186 kg	1322 mm	1643 mm	750 mm
Width	Reference number	Reference number E-RECO	Skid Steer Carriage reference	4 point Carriage	Euro Carriage
1356 mm	52781808	931627	52578030	52742058	52742059

Mandatory machine equipment: ✕

JIBS

Frame Mounted Hook



Frame Mounted Hook - PC 50

Distance to center of gravity	Capacity	Overall weight	Maximum outreach	Overall height	Overall length
166 mm	5000 kg	115 kg	470 mm	500 mm	606 mm
Width	Reference number	Reference number E-RECO			
815 mm	708544	921335			

Mandatory machine equipment: ✕

SWEEPER & CLEANER

Sweeper 2 in 1



Sweeper 2 in 1 - SCC 2600

Overall weight	Overall height	Overall length	Width	Reference number
755 kg	950 mm	2140 mm	2820 mm	52000515

Mandatory machine equipment: ☺☺



Sweeper 2 in 1 - SCC 2600 +

Overall weight	Overall height	Overall length	Width	Reference number	Reference number E-RECO
730 kg	950 mm	2170 mm	2820 mm	52000517	52000517

Mandatory machine equipment:



Sweeper 2 in 1 - SCC 2600 HWA +

Overall weight	Overall height	Overall length	Width	Reference number
800 kg	1550 mm	2170 mm	2820 mm	52000519

Mandatory machine equipment: +

LEVELLING SOLUTIONS

Grain Pusher



Grain Pusher - BLGP 2320 / 3900

Overall weight	Overall height	Overall length	Width	Reference number
439 kg	946 mm	3942 mm	2320 mm	52812920

Mandatory machine equipment:

MISCELLANEOUS ATTACHMENTS

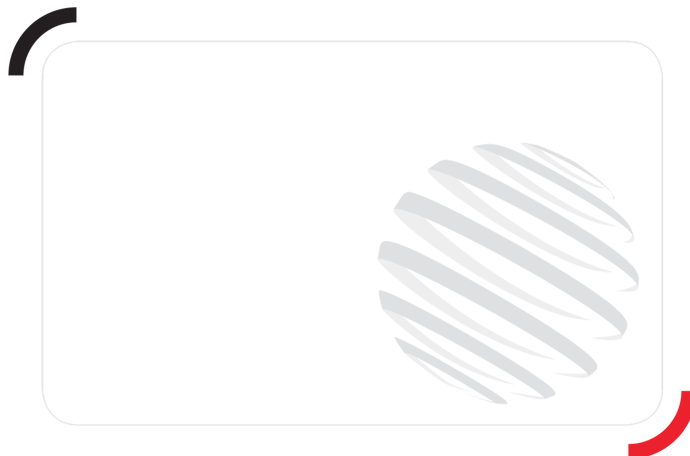
Material Basket



Material Basket - MB 2000 / 1000

Distance to center of gravity	Capacity	Overall weight	Overall height	Overall length	Width
694 mm	1000 kg	400 kg	1215 mm	1632 mm	2056 mm
Depth	Reference number				
1120 mm	52596600				

Mandatory machine equipment:



Head Office

B.P. 249 - 430 rue de l'Aubinière
44150 Ancenis Cedex - France

Tel: +33 (0)2 40 09 10 11 - Fax: +33 (0)2 40 09 10 97

www.manitou.com



This publication provides a description of the configuration versions and options for Manitou products, which may differ for equipment. The equipment presented in this brochure may be part of a series, as an option, or it may not be available, depending on the versions. Manitou reserves the right, at any time and without notice, to amend the specifications described and represented. The specifications provided do not bind the manufacturer. For more details, please contact your Manitou agent. This is not a contractually binding document. The presentation of the products is not contractually binding. List of specifications non-exhaustive.

The logos as well as the visual identity of the company are owned by Manitou and cannot be used without authorisation. All rights reserved. The photos and diagrams contained in this brochure are only provided for consultation and information purposes.

MANITOU BF SA - Limited company with board of directors - Share capital: 39,668,399 euros - 857 802 508 RCS Nantes